

## Installation Guide USB-R16OUT-8IDIN

READ ME FIRST.....	2
System Requirements.....	2
Minimum System Requirement:.....	2
Recommended System Requirement:.....	2
Application Installation.....	3
Windows USB Device Driver.....	4

## READ ME FIRST

Please **DO NOT** connect your host system to the USB R16OUT-8IDIN controller until the system software and device drivers have been installed.

## System Requirements

The R16OUT 8IDIN controller communicates with the HOST PC via the USB interface. The controller has been designed to work with USB version 1.1 and 2.0.

### ***Minimum System Requirement:***

Processor:	Pentium 3
Memory:	128 Mb RAM
Operating system:	Windows 98
USB Interface:	USB 1.1

### ***Recommended System Requirement:***

Processor:	Pentium 4
Memory:	512 Mb RAM
Operating system:	Windows XP
USB Interface:	USB 2.0

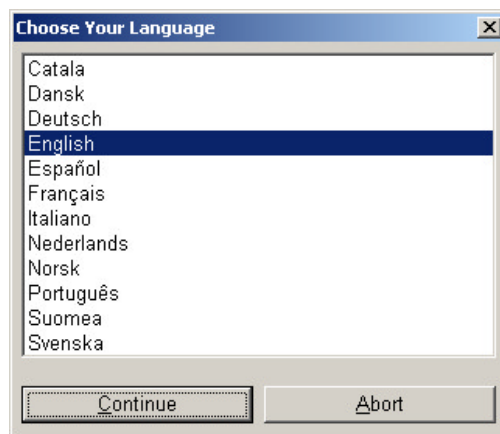
## Application Installation

The application installation and device drivers are located on the installation CD supplied with the controller.

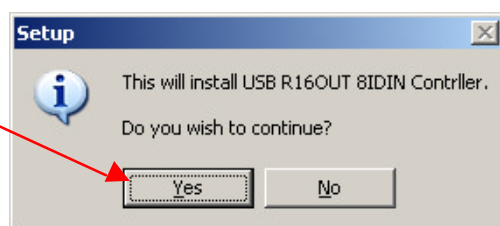
To re-create the installation CD, download the zipped contents from URL:  
[www.circad.co.uk/downloads/r16out8idin.zip](http://www.circad.co.uk/downloads/r16out8idin.zip)

Unzip the file contents to a blank CD to make an installation disk. The Installation CD will Auto-run on insertion, alternatively run **setup.exe** from the root directory of the CD.

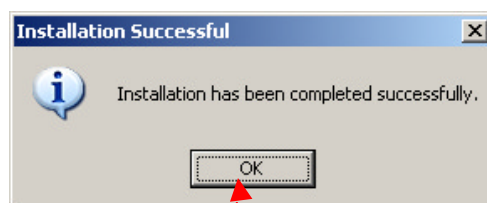
First select language. Selecting a language will only affect messages from the installation program, not the controller application.



Next you will be prompted to install USB R16OUT 8DIN Controller, answer **Yes** to continue.



The Software will then install to your hard disk.

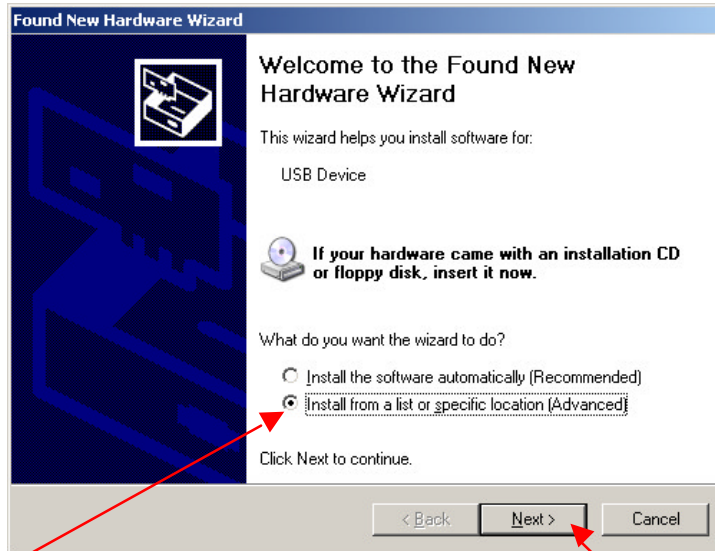


After successful installation press **OK** to continue.

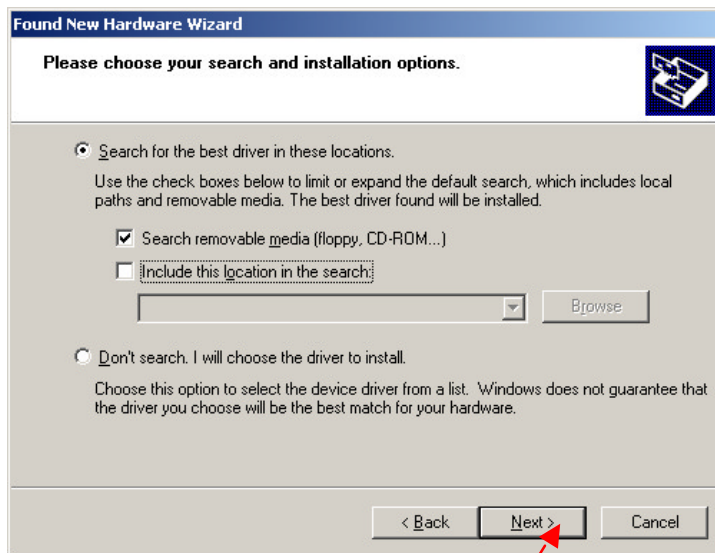
## Windows USB Device Driver

Connect the USB-R16OUT-8IDIN controller to your Host PC using a USB lead, then power on the controller.

The Host computer will “PING” to indicate it has detected a new USB device; Windows will automatically open the New Hardware Wizard.

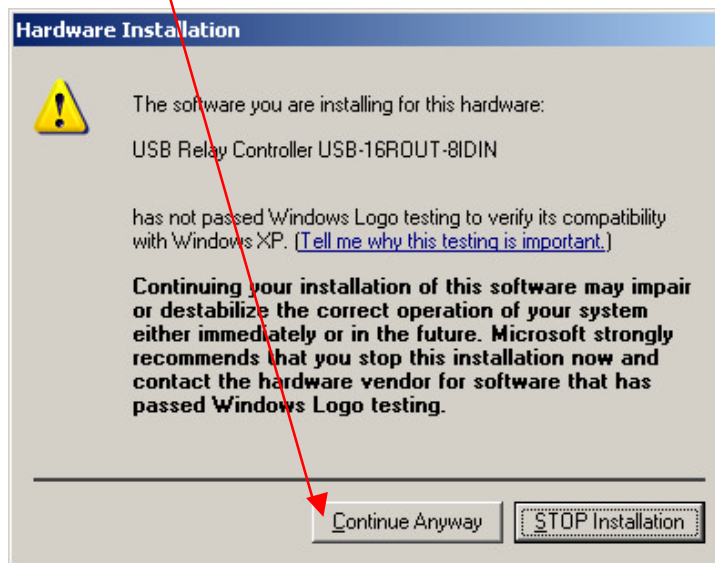


Select, install from a specific location, and then press **Next**.

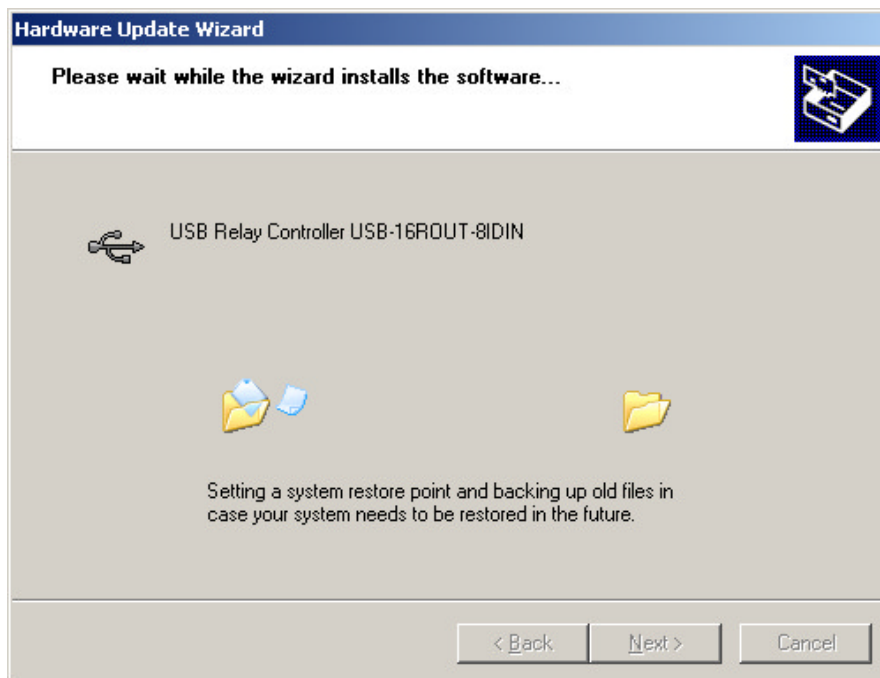


Ensure that the EzBIOS Install CD is present in the drive, and Search removable media is ticked, then Press **Next**.

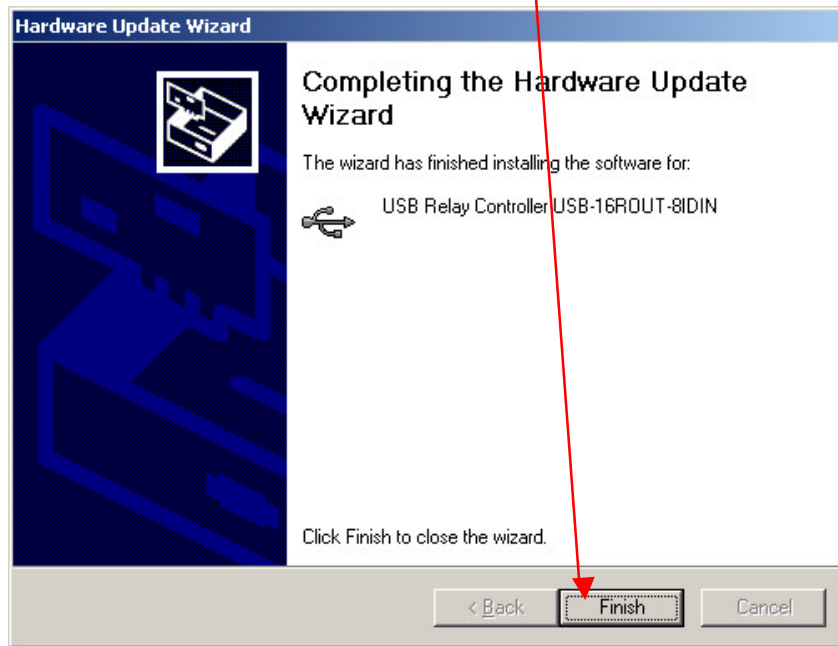
If you have Windows XP, the following driver warning will appear, please select **Continue Anyway**.



Windows will now install device drivers for the USB-16ROUT-8IDIN controller.



Press **Finish** to complete the Driver installation.



After installing the device driver, start the 16ROUT8IDIN Application. The **Controller Connection** LED will light.

